



1406 Pearl Street  
Boulder, CO

---

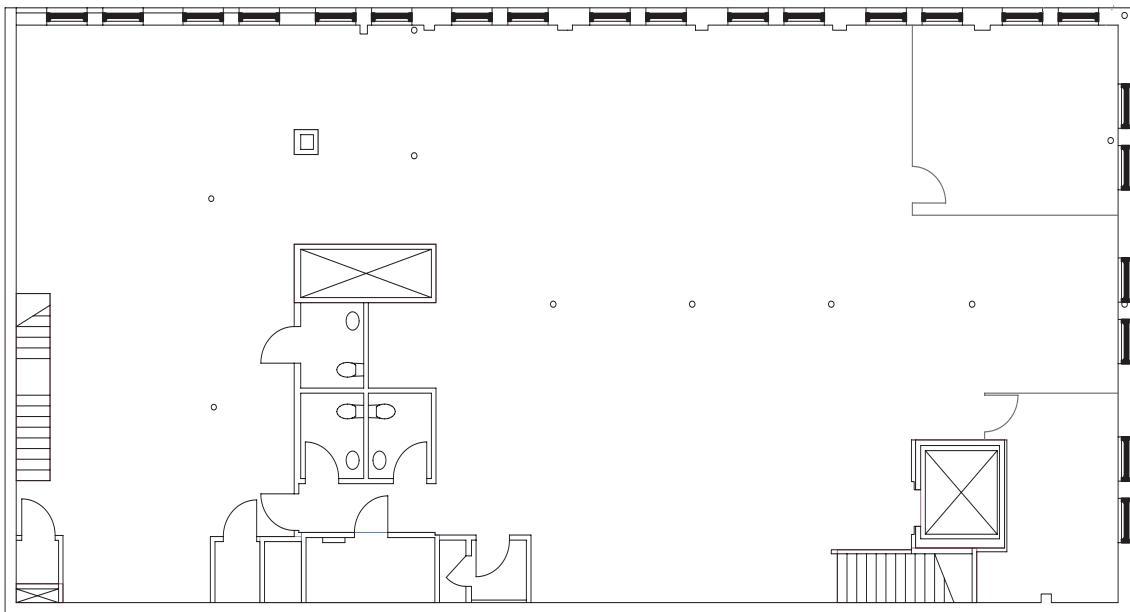
Boulder Pearl Street  
**Portfolio**



# Available Space

## Second Level

Suite 200 | 4,950 sf



LEASING

**Joseph Heath**  
303.217.7959  
joe.heath@am.jll.com

**Don Misner**  
303.217.7957  
don.misner@am.jll.com

**Jonathan Shirazi**  
303.217.7968  
jonathan.shirazi@am.jll.com

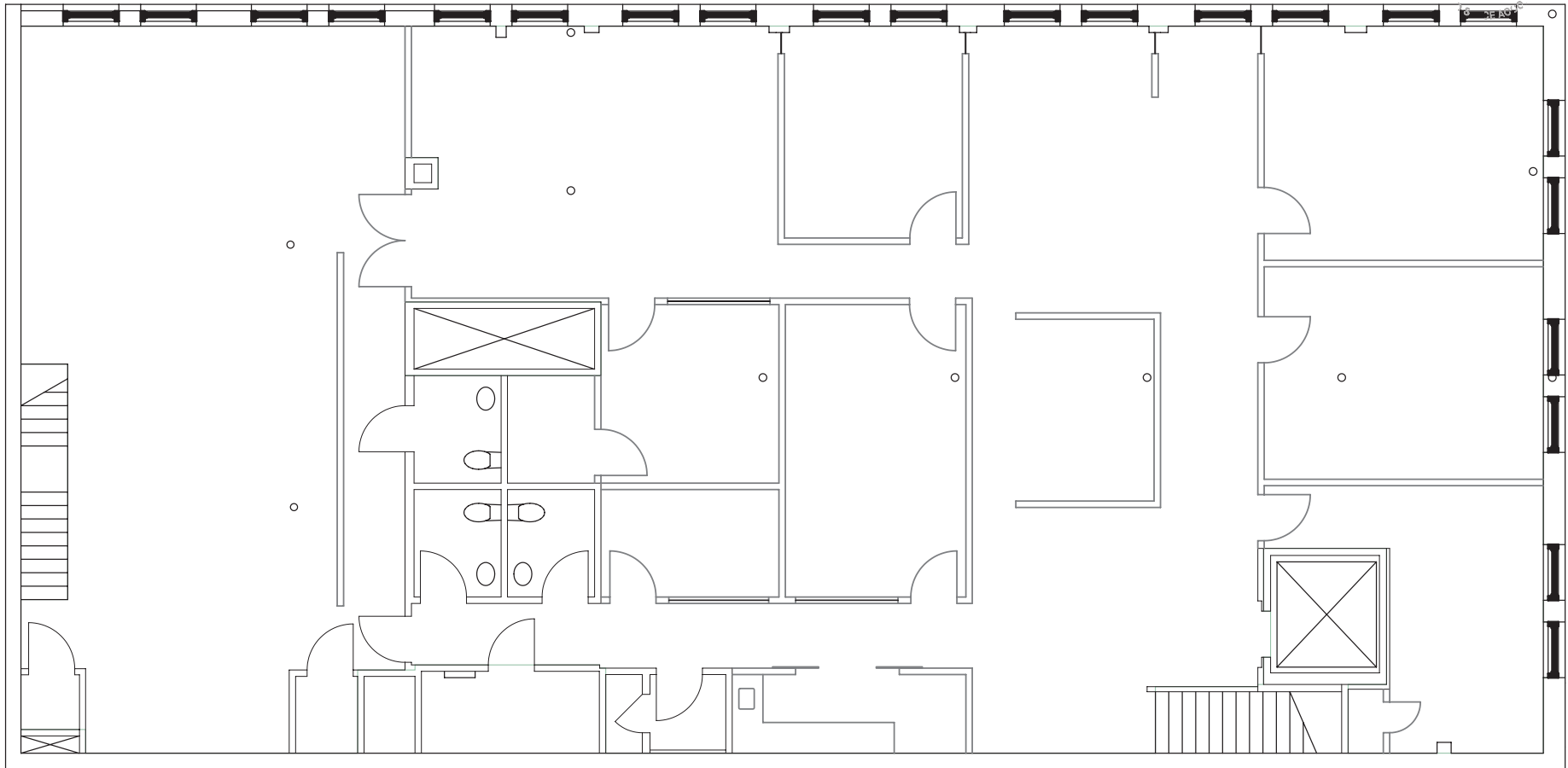


## Features

- Located on the corner of 14th Street and the iconic bricks of the Pearl Street pedestrian mall
- Above market parking ratio in a private parking garage
- Numerous chef driven food options only steps away
- Access to common conference room located at 1426 Pearl
- Extreme proximity to on-site management office
- Managed locally by Unico Properties LLC - known for its commitment to delivering top-tier customer service and building quality

# PEARL STREET PORTFOLIO

## CURRENT CONDITION



# 1406 Pearl

## Suite 200 4,950 SF

For further leasing information please contact:

**JOE HEATH**

+1 303 217 7959

[joe.heath@am.jll.com](mailto:joe.heath@am.jll.com)

**DON MISNER**

+1 303 217 7957

[don.misner@am.jll.com](mailto:don.misner@am.jll.com)

**JONATHAN SHIRAZI**

+1 303 217 7968

[jonathan.shirazi@am.jll.com](mailto:jonathan.shirazi@am.jll.com)

